



HORSHAM AGRICULTURAL SOCIETY

2024

horsham
agricultural

Show

28 & 29 September

COMPETITION SCHEDULE



MAKER'S PAVILION

Competition Program

Horsham Agricultural Society presents the early edition of the Competition Program for the Maker's Pavilion.

We have produced this so that you can grow, prepare, and create your entries with as much time as you need.

This also includes a lot of competitions for kids that can be fun activities during the school holidays!

Sponsors, prizes, and additional competition sections will be included in the larger competition schedule (released early August) and promoted on Facebook and other social media.

If you have any questions or want to know more details about any of these competitions, please call or come down to the Horsham Show office at Maydale Reserve.

*Make sure you follow the
Horsham Show on Facebook to
keep up to date!*

INDEX

General Information

Important Information	3
Horsham Show Competition Regulations	4
Victorian Agricultural Shows (VAS Ltd) Regulations	6
Wimmera Agricultural Societies Association (WASA) Regulations	7
Entering Competitions Online	8
Wimmera Show Dates 2024	10

Competition Sections

Junior Art, Craft & Hobbies	11
Junior Home Industries & Hobbies	18
Biggest Weed Competition – Open, Family	20
Art – Senior	21
Knitting, Crochet & Felting – Senior	22
Sewing & Needlecraft – Senior	25
Hobbies & Home Industries – Senior	28
Lapidary – Novice, Open	37
Cookery – Junior & Senior	39
Photography – Junior, Novice, Open, Advanced	46
Lego & Scarecrows – Junior, Senior, Family	51

Competition Instructions & Recipes

Forever Handprints	54
Five Native Leaves	55
Leaf Insects	57
Class 431 – Lazy Daisy Cake Recipe	59
Class 1000 VAS Rich Fruit Cake Recipe	60
Class 1001 VAS Junior Boiled Fruit Cake Recipe	63
Class 1002 VAS Carrot Cake Recipe	64
Class 1003 VAS Junior Carrot and Sultana Muffins Recipe	65
Photography Classes 1010 & 1011: Architecture	64

IMPORTANT INFORMATION



How to Enter

Online

<https://showday.online/show/horsham>

In Person

Please visit the Show Office during office hours, from 1 September 2024 for assistance in entering.

Dates for entries

Entries Open:

15 June 2024

Entries Close

1. **Lapidary: 15 August 2024**

Refer to Lapidary Section for details (including delivery of entries)

2. **Photography: 15 September 2024**

See photography section for entry instructions

3. **Jams, preserves, eggs, handcraft, art, and Lego exhibits: 4pm, Friday 20 September 2024**

Including delivery of entries

4. **All perishables including cookery, flowers, fruit, and vegetables: 9AM – 11am, Saturday 28 September 2024**

Including delivery of entries

HORSHAM SHOW

COMPETITION

REGULATIONS



1. Please refer to Important Information Section for Entry Date requirements.
2. Any entry that has previously won first prize at the Horsham Show is ineligible to compete.
3. All entries must be the work of the exhibitor.
4. All exhibitors must be amateurs in the Class in which they are exhibiting.
5. Horsham Agricultural Society reserves the right to refuse an exhibit or an exhibitor for not observing pavilion rules without notice.
6. Regional judging of all WASA competitions will take place later in 2024. Winners of those sections will be notified.
7. Local VAS Ltd winners, who then go on to win at WASA final will compete at the next State Final at Royal Melbourne Show.
8. HAS does not tolerate any disorderly, disruptive, or offensive behaviour towards volunteers, stewards, and judges. At any time if any patron is behaving in an unacceptable manner, they will be asked to leave the showgrounds.
9. Class and Section selection is the responsibility of the entrant. Items deemed not eligible for a section will be moved to an "open" section and judged accordingly.
10. All competitions included in this schedule are subject to change.

HORSHAM SHOW SHOWGROUNDS SAFETY



The Horsham Agricultural Society Inc is committed to providing a safe, healthy, and environmentally acceptable space for all stakeholders. We shall maintain an effective health and safety program as far as is practicable and endeavour to comply with all statutory and Common Law requirements. All competitors and exhibitors have a “Duty of Care” to avoid exposing themselves or other people to unsafe situations that could lead to injury.

VICTORIAN AGRICULTURAL SHOWS (VAS LTD)

Competition Regulations

1. A person can represent only one Society / Group for VAS Ltd
2. An article having won at Show level will compete at Group Final; winner will then compete at next Royal Melbourne Show. A committee member will contact any eligible exhibitors prior to the competition to arrange the details of entering and collecting exhibits. The show committee cannot accept responsibility for exhibits outside of these parameters.
3. An article having won Group Final cannot compete further until after the Royal Melbourne Show.
4. An article having won at the Royal Melbourne Show in any class is no longer eligible to compete in the competition.
5. Each entry must be the bona fide work of the exhibitor.
6. If for any reason the winner is unable to compete at Group or State final level, then the second-Place getter is eligible to compete.
7. Items, except Cookery exhibits, must be the same as won at local Show or Group.
8. A person will not be permitted to win at more than one Show within the State in any one Show year. Persons not adhering to this rule will be required to forfeit/refund prize money.
9. An article having won first at a show cannot be shown at any other state show that year. All work to have been completed within the last 12 months.



WIMMERA AGRICULTURAL SOCIETIES ASSOCIATION (WASA)

Competition Regulations

1. A person having won at a local Show will compete at a Wimmera Group final in November. A committee member will contact any eligible exhibitors prior to the competition to arrange the details of entering and collecting exhibits. The show committee cannot accept responsibility for exhibits outside of these parameters.
2. A person having won at Show level, is not eligible for entry at any other show until after the Group judging when, if not the winning entry, can compete again.
3. Each article entered must be the bona fide work of the exhibitor.
4. If for any reason a winner is unable to compete at Group Final, then second placegetter is eligible to compete.
5. WASA entrants must reside in the boundaries of the Wimmera Group.
6. Winners at WASA Group Final receive \$25 cash.
7. Items, except Cookery Exhibits which are entered in the Wimmera final judging must be exactly the same as won at local Show.



ENTERING COMPETITIONS ONLINE

<https://showday.online/show/horsham>

1. Create a new account or login to your account using your previous details from last years' show entries
2. Select the show you would like to enter
3. Click on PLACE AN ENTRY
4. Click on INDIVIDUAL ENTRY
5. In Entrant Name select your Entrant from the drop down or click on ADD NEW to add a new entrant to your account
6. If clicking Add New fill out your Entrants name. Other fields are optional
7. In EXHIBIT TYPE select INDOOR / DISPLAY
8. Click on SELECT CLASSES
9. From the drop down choose what you would like to enter
10. On the pop up, tick the box to accept the entry notes for this section
11. Click the PLUS symbol beside the section you are entering to expand to the classes
12. Click on the class or classes you are entering to select them
13. If entering multiple items into the same class, increase the QTY counter to reflect the number you would like to enter
14. Fill out the items name in the Exhibition Name box if applicable e.g. painting name and any other fields as asked
15. ONCE ALL CLASSES HAVE BEEN SELECTED
16. Click on ADD ANOTHER ENTRY if you need to place more entries for this show and repeat this process.
17. Click on FINISHED ADDING CLASSES if you do not need to place any more entries for this show.

18. On the next screen select do not select any 'extra items.'
These are not relevant to The Horsham Show competitions.
19. Click on FINISHED ADDING EXTRAS once done
20. Tick the box to agree to our website T&C's
21. You will now be emailed an acknowledgement of your entries, including your entrance tickets, should you wish to print them off and pin them to your entries prior to delivery.
22. Please check you Junk / Spam folder if you do not receive the confirmation email.

If you have any issues or concerns in entering competitions, please:

1. Attend the Horsham Show Office at Maydale Pavilion, Horsham Showgrounds from 1 September 2024, during office hours
2. Email hello@horshamshow.com.au to book a time or get answers to your questions.

WIMMERA SHOW DATES 2024

Horsham	28 & 29 September
Murtoa	4 October
Goroke	5 October
St Arnaud	5 & 6 October
Minyip	No Show
Rupanyup	No Show
Warracknabeal	10 October
Donald	11 & 12 October
Kaniva	12 October
Rainbow	15 October
Nhill	17 October
Dimboola	19 October
Jeparit	20 October
Stawell	26 October
Ararat	27 October
Hopetoun	No Show
Natimuk	22 March (2025)



JUNIOR ART, CRAFT & HOBBIES

Art Section

New Competition: Colouring-In!

Pre-School

Class 1 Painting – Any Subject

Class 2 Drawing – Any Subject

Class 3 Collage – Any Subject

Class 4 Sculpture – Any Subject

Class 5 Colouring-In

Please pick up your colouring-in pages from Horsham Agricultural Society at Maydale Reserve from 20 June during office hours.

Primary School: Prep to Year 3

Class 6 Painting – Any Subject

Class 7 Drawing – Any Subject

Class 8 Collage – Any Subject

Class 9 Sculpture – Any Subject

Class 10 Colouring-In

Please pick up your colouring-in pages from Horsham Agricultural Society at Maydale Reserve from 20th June during office hours.

Primary School: Years 4 to 6

Class 11 Painting – Any Subject

Class 12 Drawing – Any Subject

Class 13 Collage – Any Subject

Class 14 Sculpture – Any Subject

Primary School: Children with Disabilities

Class 15 Painting – Any Subject

Class 16 Drawing – Any Subject

Class 17 Collage – Any Subject

Class 18 Sculpture – Any Subject

Class 19 Colouring-In

Please pick up your colouring-in pages from Horsham Agricultural Society at Maydale Reserve from 20th June during office hours.

Secondary School: Years 7 to 9

Class 20 Painting – Any Subject

Class 21 Drawing – Any Subject

Class 22 Collage – Any Subject

Class 23 Sculpture – Any Subject

Secondary School: Years 10 to 12

Class 24 Painting – Any Subject

Class 25 Drawing – Any Subject

Class 26 Collage – Any Subject

Class 27 Sculpture – Any Subject

Secondary School: Children with Disabilities

Class 28 Painting – Any Subject

Class 29 Drawing – Any Subject

Class 30 Collage – Any Subject

Class 31 Sculpture – Any Subject

JUNIOR ART, CRAFT & HOBBIES

Craft Section

New Competition: Friendship Bracelets!

5 years and under

Class 32 Decorated Wooden Spoon

Class 33 Decorated Paper Plate

Class 34 Any other item not mentioned

Class 35 Decorated Jars

Class 36 Friendship Bracelets

Create the most unique, decorative and stand out friendship bracelet!

Class 37 Sculpture Made of Recycled Items

Class 38 Decorated Glass Bottle

6 – 8 Years of Age – Craft

Class 39 Decorated Paper Plate

Class 40 Handmade Card

No sewing / embroidery, must include envelope & insert

Class 41 Unfilled Decorated Jar or Bottle

Stickers permitted

Class 42 Layered Filled Jar

Sealed with different materials (e.g. sands, grains, flowers, lollies, seeds etc)

Class 43 Painted Rock

Class 44 Any other article not mentioned

Class 36 Friendship Bracelets

Create the most unique, decorative and stand out friendship bracelet!

Class 46 Forever Handprints

Please refer to instruction sheet in this schedule

Class 47 Sculpture Made of Recycled Items

Class 48 Decorated Glass Bottle

9 – 12 Years of Age – Craft

Class 49 Any other article not mentioned in Section

Class 50 Most Attractively Wrapped Gift / Parcel

Class 51 Layered Filled Jar (sealed)

Filled with different items (e.g. sands, grains, flowers, lollies, seeds etc)

Class 52 Painted Rock

Class 53 Sewn Article

Class 54 Decorated Hat

Class 55 Decorated Jar

Class 56 Forever Handprints

Please refer to instruction sheet in this schedule

Class 57 Sculpture Made of Recycled Items

Class 58 Decorated Glass Bottle

Class 59 Friendship Bracelets

Create the most unique, decorative and stand out friendship bracelet!

13 – 18 years of age – Craft

Class 60 Decorated Cushion

Class 61 Decorated jar

Class 62 Garment of sewing – wearable

Class 63 Item of sewing – not clothing

Class 64 Sculpture made of recycled materials

Class 65 Piece of Jewellery – mixed media

Class 66 Sculpture Made with Recycled Items

Class 67 Decorated Glass Bottle

Class 68 Friendship Bracelets

Create the most unique, decorative and stand out friendship bracelet!

Children with Disabilities

Class 69 Decorated Wooden Spoon

Class 70 Painted Rock

Class 71 Decorated Paper Plate

Class 72 Any other article not mentioned

Class 73 Decorated Jars

Class 74 Forever Handprints

Please refer to the instruction sheet in this schedule

Class 75 Sculpture Made of Recycled Items

Class 76 Decorated Glass Bottle

Class 77 Friendship Bracelets

Create the most unique, decorative and stand out friendship bracelet!

Do you have questions about a competition?

**Please contact Horsham Show
through Facebook or
hello@horshamshow.com.au
for all the answers!**

???

??

JUNIOR HOME INDUSTRIES & HOBBIES

New Competition: Mr Potato Head People!

Eggs

All eggs must be clean.

Primary School Age

Class 80 Three Hen Eggs – same colour

Class 81 Three Hen Eggs – different colours

Secondary School Age

Class 82 Four Hen Eggs – same colour

Class 83 Four Hen Eggs – different colours

Horticulture

5 years and under

Class 84 Posy for Grandma

Class 85 Mr Potato Head People

Make your own Mr, Mrs, or family of potato heads out of vegetables and fruit

Class 86 Largest Gum Leaf

Class 87 Fairy Garden

Displayed a plate

Class 88 Collection of Five Native Leaves

Please refer to instruction sheet in this schedule

Class 89 Collection of Gumnuts in a Jar

6 – 8 Years of Age

Class 91 Fairy Garden

Displayed on a plate

Class 92 Mr Potato Head People

Make your own Mr, Mrs, or family of potato heads out of vegetables and fruit

Class 93 Posie for Grandma

Class 94 Collection 5 Australian Native Leaves

Please refer to instruction sheet in this schedule

Class 95 Leaf Insect

Class 96 Flower(s) using any Materials

9 – 12 Years of Age

Class 97 Mr Potato Head People

Make your own Mr, Mrs, or family of potato heads out of vegetables and fruit

Class 98 Fairy Garden

Displayed on a plate

Class 99 Posie for Grandma

Class 100 Collection 5 Australian Native Leaves

Please refer to instruction sheet in this schedule

Class 101 Collection of Gum Nuts in a Jar

Class 102 Bowl of Floating Flowers

Class 103 Flower(s) using any Materials

13 – 18 Years of Age

Class 104 Leaf Insect

Class 105 Flower(s) using any Materials

Children With Disabilities

Class 106 Mr Potato Head People

Make your own Mr, Mrs, or family of potato heads out of vegetables and fruit

Class 107 Posie for Grandma

Class 108 Collection 5 Australian Native Leaves

Family / Group

Class 109 Mr Potato Head Family

Make your family of potato heads out of vegetables and fruit

Class 110 Scavenger Hunt Nature Box

Please contact Horsham Show Office for scavenger hunt list!

Class 111 Bug Hotel

Class 112 Horsham Show Family Tree

BIGGEST WEED COMPETITION!

Class 113 Biggest Weed

Calling all giant weeds! Horsham Agricultural Society will award the biggest weed a prize of \$100! Start growing your weeds now! Individuals, families, and group entries are all welcome!

ART – SENIOR

For entrants that have not won a prize in this section in previous years and do not earn money / have a profession in this area.

Class 200 Painting – Any Subject

Class 201 Drawing – Any Subject

Class 202 Collage – Any Subject

Class 203 Sculpture – Any Subject

Adults with disabilities

Class 208 Painting – Any Subject

Class 209 Drawing – Any Subject

Class 210 Collage – Any Subject

Class 211 Sculpture – Any Subject

KNITTING, CROCHET & FELTING – SENIOR

Class 212 Woven Article

Class 213 Hand Made Shawl (baby)

Class 214 Hand Made Shawl (adult)

Class 215 Crochet item

Class 216 Crochet Rug

Class 217 Knitted Knee Rug

Class 218 Knitted Socks

Class 219 Knitted Scarf

Class 220 Crochet Scarf

Class 221 Hand Knitted Garment

Any ply

Class 222 Skein Home Spun Wool or other Fibre

Approximately 50g

Class 223 Hand Knitted Baby Booties

Class 224 Hand Knitted Square

First time entrants only

Class 225 Hand Knitted Item

Home Spun Wool or Other Fibre

Class 226 Hand Knitted Beanie

Class 227 Crochet Beanie

Class 228 Hand Knitted Novelty Article

Class 229 Soft Toy

Handmade, any materials

Class 230 Hand Knitted Toy

Class 231 Family of Soft Toys

Handmade, any materials

Class 232 Dressed Doll in Wool or Fabric

Max. height 16" (41cm)

Class 233 Hand Felted Item

Class 234 Crochet Article in 20 Cotton

First time entrants only

Class 235 Crochet Article in 30 Cotton or Finer

Class 1005 VAS State Knitting Competition

NEW REQUIREMENT: hand knitted blanket not more than one metre on any one side. Each exhibit must be made from pure wool/wool blend of any ply. Exhibitor to attach label from wool used or receipt from the woollen mill.

Class 1008 VAS Crochet Competition

A 3D item, no larger than 50cms on any one side made from pure wool/ wool blend of any ply. NEW REQUIREMENT: Exhibitor to attach label from wool used or receipt from the woollen mill.

Class 1022 WASA Hand knitted baby garment

Any ply, not cooked or non-perishable items competing at WASA level, must be same as won at local show.

Class 1023 WASA Crochet item

Made in crochet cotton

Class 1024 WASA Crochet/hand knitted article

Any ply yarn, feathers, jazz etc. Is not a plied yarn. Not cooked or non-perishable items competing at WASA level, must be same as won at local show.

**Do you have questions about
a competition?**

**Please contact Horsham
Show through Facebook or
hello@horshamshow.com.au
for all the answers!**

???

??

SEWING & NEEDLECRAFT –

SENIOR

Changes made to Classes 1004 and 1007 (VAS Patchwork and VAS Sewing competitions, respectively)

Class 236 Article Made from New or Used Waste Material

Class 237 Patchwork item

Class 238 Cushion

Any type, filled with fabric, covered insert

Class 239 Item of Redwork

Class 240 Most Useful Item

Costs \$5 or less

Class 241 Machine Made Apron

Full or half sized

Class 242 Decorated Hand Towel

Class 243 Decorated Tea Towel

Class 244 Best Fabric Bag

No leather

Class 245 Hand Embroidered Article

Class 1004 VAS Patchwork Competition

The exhibit is to be no larger than 90cm x 125cm, machine or hand pieced, quilted by the exhibitor only, embellishments allowed but not to overpower the pattern.

Class 1006 VAS Embroidery Competition

The exhibit to be an article of hand embroidery any type, excluding cross stitch.

Class 1007 VAS Sewing Competition

Tote Bag up to 30cm width x 40cm height maximum, gusset depth up to 20cm, using approximately 50% recycled components. Machine sewn & may be hand finished; embellishments allowed. Knitted/Crocheted items not acceptable.

Creative Craft

Class 246 Three Distinct Pieces of Craft

Class 247 Any Piece of Craft

Class 248 Coat Hanger, covered

Class 249 Coat Hanger, knitted cover

Class 250 Article Made with Beads

Class 251 Cross Stitch on Fine Linen or Aida

Class 252 Any Article of Handcraft by a CWA Member

Class 253 Piece of Stump Work

Class 254 One Person's Craft Work

Two or more items

Class 255 One Handmade Greeting Card

Class 256 One Handmade Embroidered Card

Class 1009 VAS Cross Stitch Competition

An article of cross stitch any type up to 60cms on all sides including frame. Minimal embellishments allowed. Must comply with VAS rules and regulations

Craft for Adults with Disabilities

Class 257 Item Made from Beading

Class 258 Item made with recycled materials

Class 259 Paper Mache sculpture

Class 260 Pottery Using Air Dry Clay

Class 261 Hand Made Card

Class 262 Mask

HOBBIES & HOME INDUSTRIES – SENIOR

Produce, Preserves, Fruits & Vegetables

Produce

Class 263 Three items of home grown produce

No cooked items

Class 264 One Jar Honey

To be homemade, no jars to be smaller than 250gms, lids need to be loosened at The Cattle Shed or will not be judged.

Class 265 Hen Eggs – white

6 eggs, no double yolks

Class 266 Hen Eggs – Brown

6 eggs, no double yolks

Class 267 Hen Eggs – Tinted

6 eggs, no double yolks

Class 268 Hen Eggs – Bantam

6 eggs, no double yolks

Preserves

To be homemade, wax removed before exhibiting, no jars to be smaller than 250gms, lids need to be loosened at The Cattle Shed or will not be judged.

Class 269 Apricot Jam

One jar only

Class 270 Melon and Lemon Jam

One jar only

Class 271 Fig Jam

One jar only

Class 272 Plum Jam

One jar only

Class 273 Berry Jam

One jar only

Class 274 Jelly Jar

Any variety, one jar only

Class 275 Cumquat Marmalade

One jar only

Class 276 Orange and Lemon Marmalade

One jar only

Class 277 Any Marmalade

Any variety, one jar only

Class 278 Lemon Butter

One jar only

Class 279 Fruit Paste

Any variety, one jar only

Class 280 Any other fruit butter

Any variety, one jar only

Class 281 Tomato Sauce

Clear glass container

Class 282 Plum Sauce

Clear glass container

Class 283 Bottle of Sauce – any variety

Clear glass container

Class 284 Mustards – mixed

One jar only

Class 285 Relish

One jar only

Class 286 Zucchini Relish

One jar only

Class 287 Group jars

Two jam, two pickles, relish, and/or chutney

Class 288 Chutney

Any variety, one jar only

Class 289 Pickles – any variety

One jar only

Class 1019 WASA Competition – Sauce, relish, pickle combination

One bottle tomato sauce, one jar relish, one jar mustard seed pickles

Class 1020 WASA Competition – Jam and Jelly combo

One jar jam, one jar jelly. Winner at local show to bring a new jar of each out of the same batch to WASA judging day.

Fruit & Vegetables

All produce in this group must be grown by the exhibitor.

Class 290 Three onions

Class 291 One Cabbage

Class 292 One Cauliflower

Class 293 Three carrots

Foliage attached

Class 294 Three Parsnips

Foliage attached

Class 295 Three Beetroots

Foliage attached

Class 296 One Broccoli

Class 297 Three varieties of any vegetables

Class 298 Broad Beans

Class 299 Green Peas in Pod

Class 300 One Bunch Green Onions

Class 301 Three Stalks of Rhubarb

Class 302 One Bunch of Radishes

Foliage attached

Class 303 One Lettuce

Class 304 Collection of Garden Herbs

4 varieties or more

Class 305 One Pumpkin

Any variety

Class 306 One Bunch of Silverbeet

Class 307 Collection of vegetables

Can include herbs

Class 308 Four Oranges

Any variety, grown in the Wimmera, foliage attached

Class 309 Four Lemons

Any variety, grown in the Wimmera, foliage attached

Class 310 Collection of Citrus Fruits

Any variety, grown in the Wimmera, foliage attached

Class 311 One fruit or vegetable

Class 312 Dehydrated citrus

Presented in a glass jar

HOBBIES & HOME INDUSTRIES – SENIOR

Horticulture Section

Flowers and plants

Class 313 Collection of Cut Flowers

One stem of each variety

Class 314 Three Distinct Varieties of Cut Flowers

One stem of each variety

Class 315 One variety of cut flowers

Six stems total

Class 316 Collection of Sweet Peas

No more than 10 stems

Class 317 Collection of Freesias

No more than 10 stems

Class 318 Bearded Iris

One Stem

Class 319 Dutch Iris

One Cut

Class 320 Geranium

One Truss / Stem

Class 321 Antirrhinum (Snapdragon)

One Stem

Class 322 Potted Indoor Plant

One plant only

Class 323 Flowering Creeper

One Stem

Class 324 Daisies

One collection - any variety

Class 325 Polyanthus

One stem

Class 326 Any Other Cut Flower

Not in other class. Shrubs, trees, and climbers excluded

Class 327 Dried Flower Arrangement

Native flowers only, 11 items or more, filler is accepted

Class 328 Collection Iceland Poppies

Less than 12 blooms

Class 329 Collection Ranunculi

Less than 10 stems

Class 330 Collection Anemones

Less than 10 stems

Class 331 Pansies

Four stems - Distinct colours, presented on a flat plate

Class 332 Collection of Calendulas

No more than 10 stems

Class 333 Two Distinct Varieties Pink/Red Flowers

One stem of each

Class 334 Pink, Mauve, Red, Yellow, Cream / White
Blooms

One stem of each

Class 335 Pelargonium

One stem

Class 336 Potted Fern

Class 337 Plant in Flower

Class 338 Collection Bulbous, Corms, Rhizomes

More than six stems

Class 339 Peony

One stem

Class 340 Distinct Varieties of Native Flora

Three stems

Class 341 Distinct Flowering Shrubs

Three stems

Class 342 Protea

One stem

Class 343 Rhododendron Flower

One stem

Class 344 Cymbidium Orchid

One spike

Class 345 Camellia

One stem

Class 346 Arrangement for a Kitchen Windowsill

Class 347 Arrangement using Three Geraniums

Class 348 The Best of What I Have

Succulents

Class 349 One Succulent Variety presented in a pot

Class 350 Mixed Succulents

Multiple varieties of succulents, presented in one pot

Decorative

Class 351 Dried Flowers

Creatively arranged

Class 352 Bark and Succulent Arrangement

Arrangement in a vase, any varieties of succulent

Class 353 Table Centre Arrangement

Using any form of plant(s), flower(s), succulent(s), and climber(s)

Class 354 Flower and Fruit Arrangement

Can use fresh and / or artificial items

Class 1018 WASA Competition – Floral Art

Your choice, to comprise item and/or dried material

LAPIDARY – NOVICE, OPEN

All entries to be at Lapidary Clubrooms, Old Police Station, 24 Roberts Avenue, Horsham by Thursday 15th August by 12pm for pre-judging. Each entry to be in a separate package. Once judging has been completed, exhibits will be taken to The Cattle Shed at the Maydale Reserve, Horsham Showgrounds.

Class 355 Standard Cabochon (Open)

Class 356 Standard Cabochon (Novice)

Class 357 Fancy Cabochon (Open)

Class 358 Fancy Cabochon (Novice)

Class 359 Freeform Aesthetic Appeal

Class 360 Gem Tree/s

An object fabricated from natural or commercial cut or tumbled stones. Wire must be exposed, not coated, and formed to represent a tree. Base to be a stone of natural, or hammer broken or sawn bottom to create a flat base.

Class 361 Best Faceted Stone, Any Material, Any Cut

Class 362 Jewellery Commercial Mount Set with Cut Stone/s By the Entrant

Commercial mount set with cut stone/s by the entrant (Novice)

Class 363 Crystal Cluster (Open)

Class 364 Crystal Cluster (Novice)

Class 365 Minerals

Two Specimens labelled type and location, mounted on base maximum 200mmx250mm - 1 entry per person.

Class 366 Hand Fabricated Jewellery

Not intended to include lapidary, fossil, or mineral items.

Entries must be entirely of metal and/or metal clay

Class 367 Hand Fabricated Jewellery with Lapidary Item/s Set by Entrant

Class 368 Novelty Gem Craft

An article that should represent a definite object or work or art.

It may include non-lapidary components. A label stating what the item represents and main material used must be included

Class 369 Piece of Copper Enamelling created by entrant

Class 370 Most Interesting Pet Rock

COOKERY

Junior Section

New Competition: Stamped & Patterned Biscuits!

5 years and under

Class 400 Two Decorated Marie Biscuits

Class 401 Three Rumballs

Class 402 Decorated Cake

Class 403 Three Chocolate Crackles

Class 404 Stamped & Patterned Biscuits

Use stamps, cookie cutters, shapes, and textures to create patterned biscuits.

6 – 12 years of age

Class 405 Three Plain Scones

Class 406 Two Decorated Teddy Bear Biscuits

Must be edible decorations

Class 407 Three Plain Patty Cakes

Class 408 Three Muffins

Class 409 Three Honey Joys

Class 410 Three Chocolate Crackles

Class 411 Packet Cake

Brand name attached, icing on top only, no gel icing

Class 412 Three Rum Balls

Class 413 Decorated Cake

Class 414 Stamped & Patterned Biscuits

Use stamps, cookie cutters, shapes, and textures to create patterned biscuits.

13 – 18 years of age

Class 415 Three Plain Scones

No packet mix

Class 416 Three Yo-Yo Biscuits

Fork patterns to match top and bottom, white icing only

Class 417 Two Decorated Cupcakes

Class 418 Simplicity Chocolate Cake

Recipe of your choice, any tin shape / size

Class 419 Three Pieces – Unbaked Slice

Class 420 Three Pieces – Baked Slice

Class 421 Carrot Cake

Icing on top of cake only, no gel icing

Class 422 Packet Cake

Brand name attached, icing on top only, no gel icing

Class 423 Stamped & Patterned Biscuits

Use stamps, cookie cutters, shapes, and textures to create patterned biscuits.

All junior competitors

Please refer to the Rules, Regulation and Recipe found at the back reference section of this Schedule.

Class 1003 VAS Junior Carrot & Sultana Muffin Recipe

Class 1001 VAS Junior Boiled Fruit Cake

COOKERY

Senior Section

Sponges & Cakes

Class 424 Plain Sponge

2 cakes, without butter, not filled, not iced

Class 425 Ginger Fluff Sponge

2 cakes, not filled, not iced

Class 426 Honey Sponge Roll

Must be filled

Class 427 Chocolate Cake

Must be iced

Class 428 Packet Cake

Brand name attached, not iced

Class 429 Marble Cake

Must be iced

Class 430 Pavlova

Not filled

Class 431 Lazy Daisy Cake

Please refer to the instruction sheet in this schedule

Class 432 Lemon Cake

Class 459 Orange Cake - with icing, own recipe

Class 1002 VAS Carrot Cake

Please refer to the instruction sheet in this schedule

Class 1016 WASA Competition - Orange Cake

Own recipe, iced, in a loaf tin

Small Goods

Class 433 Four decorated cup cakes

No gel icing

Class 434 Plate Four Cream puffs

Not filled

Class 435 Four Lamingtons

Class 436 Four Pieces Shortbread

Class 437 Four Yo-Yo Biscuits

Fork patterns to match top and bottom, white icing only

Class 438 Four Date Scones

Class 439 Four Plain Scones

Class 440 Four Pieces – Unbaked Slice

Class 441 Four Pieces – Baked slice

Class 442 Four Jam Drops

Class 443 Shearers Morning Tea for 2 on a Tray

Class 444 Four Chocolate Chip Biscuits

Class 445 Mix of Handmade Biscuits

Presented in a Container

Class 446 High tea for 2 displayed on a tiered stand

Class 447 Four Savoury Scones

Class 448 Four Honey Joys

Class 449 Four Pieces – International Slice / Biscuit

Class 1012 WASA Competition – Four Sweet Muffins

Own recipe, not iced or decorated, no packet mixes

Class 1015 WASA Competition – Four ANZAC biscuits

Class 1017 WASA Competition – Four white bread rolls

Mixed any way, hand formed, and oven baked.

**Recipes for WASA,
VAS and some local
competitions can
be found at the
back of this
Schedule.**



Fruit Cakes & Puddings

All fruit cakes to have paper removed and to be shown on flat board.

Exhibitors to please supply oven bag for presentation.

No dressmaker pins to be inserted in cakes or puddings.

Class 450 Boiled Fruit Cake

Class 451 Fruit and Nut Loaf

Baked in a loaf tin

Class 452 Fruit Cake (dark)

1/2lb mixture, 20cm tin

Class 1000 VAS Rich Fruit Cake

Please refer to instruction sheet in this schedule

Class 1013 WASA Competition – Steamed plum pudding

Own recipe

Class 1014 WASA Competition – Boiled plum pudding

Decorated Cakes

Class 453 Wedding cake

2-3 tier, handmade ornaments, ribbon allowed

Class 454 Modern cake

2-3 tier, handmade ornaments

Class 455 Decorated cake– First Time Entrant

Class 456 Celebration cake

Handmade decorations only

Class 457 Piece of sugar craft

Handmade decorations only

Class 458 Miniature Cake

Handmade decorations only. The base board including immediate decoration must fit inside a 16cm square

Class 1021 WASA Competition – Decorated Plaque

Base centrepiece no larger than 30cm at its widest point

PHOTOGRAPHY

Instructions, Regulations and Upload Instructions

New Competitions:

Weather!

My Local Hero!

Reflections!

Mechanical Things!

Native Flora!

& Architecture!

1. For the Photography Section, you can now upload your photos when you submit your entry on <https://showday.online/show/horsham>.
2. Please limit the size of your uploads to 10MB per image.
3. Please use the below file name format for each photo:
4. "Class number-entrant name-photo title (e.g. "Class610-JohnSmith-BirdOnAWire.jpg")
5. Please ensure all images submitted are either jpg or png files.
6. Photos containing watermarks of any kind (including signature of photographer) will not be accepted.
7. There is a limit of 2 photos per person, per class.
8. A NOVICE is an entrant who has never won a prize at the Horsham Show.

9. Photographers who have won two (2) NOVICE AGGREGATE AWARDS in previous Horsham Shows can only enter in the Open Classes or Advanced Photographer Classes.
10. Photographers who have won two (2) OPEN CLASS AGGREGATE AWARDS in previous Horsham Shows, or have had an acceptance in an APS National, or a FIAP International Photographic Competition, can only enter the Advanced Photographer Classes.
11. Any Photographers who have won the aggregate in the Advanced section may continue to enter the advanced section only.

Photography Junior Section

VAS / WASA Class

Class 1010 Architecture

Bridge, Building or Structure in Australia. Please refer to WASA and VAS Rules and Regulations at the beginning of this Schedule, and the specific Instructions included in the Reference Index at the end.

Primary School Students

Class 500 Animal Portrait

Class 501 Human Portrait

Class 502 A Scene on the Farm

Class 503 Any Subject

Class 504 Weather

Class 505 My Local Hero

Please include a short paragraph explaining who the person is, and why they are your hero.

Secondary School Students

Class 506 Local Sunrise / Sunset

Class 507 Animal Portrait

Class 508 Human Portrait

Class 509 Any Subject

Class 510 Weather

Class 511 My Local Hero

Please include a short paragraph explaining who the person is, and why they are your hero.

Class 512 Reflections

Photography Senior Section

VAS / WASA Class

Class 1011 Architecture

Bridge, Building or Structure in Australia. Please refer to WASA and VAS Rules and Regulations at the beginning of this Schedule, and the specific Instructions included in the Reference Index at the end.

Novice

Class 513 Local Sunrise / Sunset

Class 514 Australian Bird

Class 515 Animal Portrait

Class 516 Canola Crop

Class 517 Any Subject

Class 518 Weather

Class 519 My Local Hero

Please include a short paragraph explaining who the person is, and why they are your hero.

Class 520 Reflections

Class 521 Mechanical Things

Class 522 Native Flora

Open

Class 523 Local Sunrise / Sunset

Class 524 Australian Bird

Class 525 Landscape – land, water, sky

Class 526 Animal Portrait

Class 527 Human Portrait

Class 528 Canola Crop

Class 529 Any Subject

Class 530 Weather

Class 531 My Local Hero

Please include a short paragraph explaining who the person is, and why they are your hero.

Class 532 Reflections

Class 533 Native Flora

Class 534 Mechanical Things

Advanced

Class 535 Local Sunrise / Sunset

Class 536 Australian Bird

Class 537 Landscape – land, water, sky

Class 538 Animal Portrait

Class 539 Human Portrait

Class 540 Canola Crop

Class 541 Any Subject

Class 542 Weather

Class 543 My Local Hero

Please include a short paragraph explaining who the person is, and why they are your hero.

Class 544 Mechanical Things

Class 545 Reflections

Class 546 Native Flora

LEGO

Junior Lego

Class 600 Kit Build: Under 13 Years Old

LEGO or Similar Construction Using a Kit

Class 601 Kit Build: 13 – 18 Years Old

LEGO or Similar Construction Using a Kit

Class 602 Kit Build: Children with Disabilities

LEGO or Similar Construction Using a Kit

Class 603 Farming Scene

Can be a kit build or own design.

Class 604 Agricultural Show Scene

Can be a kit build or your own design.

Class 605 Own Design: Under 13 Years Old

Create your own Lego construction!

Class 606 Own Design: 13 – 18 Years Old

Create your own Lego construction!

Class 607 Own Design: Children with Disabilities

Create your own Lego construction!

Class 608 LEGO Technics: Under 13 Years Old

Create your own construction or use a kit.

Class 609 LEGO Technics: 13 – 18 Years Old

Create your own construction or use a kit.

Class 610 LEGO Technics: Children with Disabilities

Create your own construction or use a kit.

LEGO

Senior Section

For people aged **18** years and over

Class 611 Kit Build

Must include box or book to reflect kit build.

Class 612 Own Design

Class 613 LEGO Technics

Create your own construction or use a kit.

SCARECROWS

Open

Class 700 Group or Family of all abilities

Item must include multiple contributors.

Class 701 Individual

COMPETITION INSTRUCTIONS & RECIPES



Index

1. Forever handprints
2. Five native leaves
3. Leaf Insects
4. Class 431 – Lazy Daisy Cake Recipe
5. Class 1000 VAS Rich Fruit Cake Recipe
6. Class 1001 VAS Junior Boiled Fruit Cake Recipe
7. Class 1002 VAS Carrot Cake Recipe
8. Class 1003 VAS Junior Carrot & Sultana Muffin Recipe
9. Class 1004 VAS Patchwork Competition
10. Class 1007 VAS Sewing Competition
11. VAS & WASA Photography classes – 1010 & 1011: Architecture

FOREVER HANDPRINTS

MATERIALS

- Play dough (homemade recipe below)
- Paint
- Paint brush
- Glitter (optional)

METHOD

1. Roll out play dough and cut into a round circle
2. Leave handprint in the centre
3. Decorate handprint with glitter or paint in a contrasting colour.

Basic play dough recipe.

INGREDIENTS

- 1/2 cup salt
- 2 tbsp cream of tartar
- 1 cup plain flour
- 1 cup water
- Food colouring of your choice
- 1 tbsp oil

METHOD

1. Mix all ingredients together in a saucepan and stir until dough is soft.
2. Allow to cool and store in a container in the fridge when not in use.



FIVE NATIVE LEAVES

MATERIALS

- Five different native Australian leaves
- Craft glue (or hot glue)
- Shoebox lid for presentation

METHOD

1. Go for a drive into the countryside or explore your backyard
2. Find 5 different gum leaves
3. Glue them to a shoebox lid



LEAF INSECTS

Let your creativity buzz with this fun and simple leaf bug craft! Using just three to six leaves and your imagination, you and your little ones can create cute bugs to celebrate the wonders of nature. So, let us head outside, breathe in the fresh air, and get started on this delightful craft!

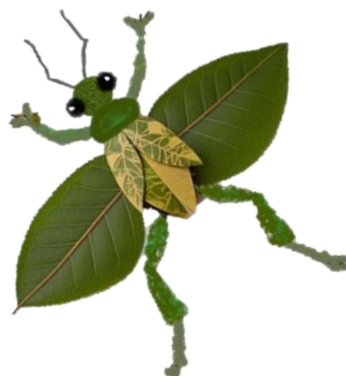
MATERIALS

- 1 large leaf or three smaller leaves (for the body) for each bug
- 2 large matching leaves (for the wings) for each bug
- Waxed / baking paper
- Glue
- Two heavy books or a flower press
- White or coloured paper
- Markers, coloured pencils, or crayons (optional)
- Scissors (optional)

INSTRUCTIONS

1. Venture outside to find the perfect leaves for your bug craft. Look for one large leaf for the body and two smaller leaves for the wings. Play around with different leaves until you find the ones that you think make the cutest bug. Make sure the leaves are fresh and not too dry, so they will be easy to work with.
2. Create Your Bug Body: Lay the large leaf on a piece of paper, with the stem pointing downwards. This will be the body of your bug. Alternatively, you can arrange two or three leaves to create your perfect compound insect body!

3. **Attach the Wings:** Position the two large matching leaves on either side of the bug's body to form the wings. Make sure the wings are pointing upwards and/or outwards, giving the bug a lively appearance. Glue the leaves onto the paper in the way you have arranged them.
4. **Add Details:** Use markers, coloured pencils, or crayons to add any details you would like to your bug, such as head, antennae, eyes, or spots on the wings. Be creative and have fun with it!
5. **Press Your Bug:** Cut a piece of waxed paper large enough to cover your bug. Place the waxed paper over the bug and gently press down. Place your bug (covered in waxed paper) between the pages of a heavy book or a flower press. Leave it for a few days to allow the leaves to dry and flatten.



CLASS 431 –

LAZY DAISY CAKE RECIPE

INGREDIENTS

- 125g soft butter
- 125g sugar
- 1 3/4 cups SR flour
- 2 eggs
- 1/2 packet raspberry jelly crystals
- 1/3 cup milk

METHOD

1. Combine all ingredients into a mixing bowl and stir until blended.
2. Now beat 3 minutes on medium speed in electric mixer.
3. Bake in loaf tin 35-40 minutes in moderate oven.
4. Ice on top only.
5. Do not remove from tin.



CLASS 1000 – VAS RICH FRUIT CAKE RECIPE

INGREDIENTS

Preferred 100% Australian Grown Produce

- 250g sultanas
- 250g chopped raisins
- 250g currants
- 125g chopped mixed peel
- 90g chopped red glace cherries
- 90g chopped blanched almonds
- 1/3 cup sherry or brandy
- 250g plain flour
- 60g self-rising flour
- 1/4 teaspoon grated nutmeg
- 1/2 teaspoon ground ginger
- 1/2 teaspoon ground cloves
- 250g butter
- 250g soft brown sugar
- 1/2 teaspoon lemon essence OR finely grated lemon rind
- 1/2 teaspoon almond essence
- 1/2 teaspoon vanilla essence
- 4 large eggs

METHOD

Please note: there has been an update to the method to include:

"Cut the fruit & almonds into 3-4 pieces"

1. Cut the fruit & almonds into 3-4 pieces and mix together all the fruits and nuts and sprinkle with the sherry or brandy. Cover and leave for at least 1 hour, but preferably overnight.
2. Sift together the flours and spices. Cream together the butter and sugar with the essences. Add the eggs one at a time, beating well after each addition, and then alternately add the fruit and flour mixtures. Mix thoroughly. The mixture should be stiff enough to support a wooden spoon.
3. Place the mixture into a prepared tin 20 cm square, straight sided, square cornered tin and bake in a slow oven for approximately 3½ - 4 hours. Allow the cake to cool in the tin.



CLASS 1001 – VAS JUNIOR

BOILED FRUIT CAKE RECIPE

INGREDIENTS

Preferred 100% Australian Grown Produce

- 375g (12oz) Mixed Fruit
- 3/4 cup brown sugar
- 1 teaspoon mixed spice
- 1/2 cup water
- 125g (4oz) butter
- 1/2 teaspoon bicarbonate of soda
- 1/2 cup sherry
- 2 eggs lightly beaten
- 2 tablespoons marmalade
- 1 cup self-raising raising flour
- 1 cup plain flour
- 1/4 teaspoon salt



METHOD

1. Place the mixed fruit, sugar, spice, water, and butter in a large saucepan and bring to the boil.
2. Simmer gently for 3 minutes, then remove from stove, add bicarbonate soda, and allow to cool.
3. Add the sherry, eggs, and marmalade, mixing well.
4. Fold in the sifted dry ingredients then place in a greased and lined 20cm round cake tin.
5. Bake in a moderately slow oven for 1.5 hours or until cooked when tested.

CLASS 1002 VAS CARROT CAKE RECIPE

INGREDIENTS

- 375g plain flour
- 2tsp baking powder
- 1 ½ tsp bicarb soda
- 2tsp ground cinnamon
- ½ tsp ground nutmeg
- ½ tsp allspice
- Pinch of salt
- 345g castor sugar
- 350ml vegetable oil
- 4 eggs
- 3 medium carrots, grated (350 grams)
- 220g tin crushed pineapple, drained
- 180g pecan nuts coarsely crushed



METHOD

1. Preheat the oven to 180C (160C fan), Grease a 23cm (9 inch) round cake tin and line with baking paper.
2. Sift the dry ingredients together into a bowl. In a separate bowl, beat the eggs and oil, then add to the dry ingredients. Mix well then add the carrots, crushed pineapple, and pecans. Mix to form a smooth batter and pour into the cake tin.
3. Bake for approximately 90 - 100 minutes.
4. Remove from the oven and allow to cool for 10 minutes in the tin on a wire rack. Upend and allow to cool on the wire rack.
5. Cake can be presented on a cake board.

CLASS 1003 VAS JUNIOR

CARROT & SULTANA MUFFINS

RECIPE

INGREDIENTS

- 2 1/2 cups self-raising flour
- 1 teaspoon ground cinnamon
- 1/4 teaspoon ground nutmeg
- 1 cup brown sugar (firmly packed)
- 1/3 cup chopped ½ sultanas
- 1 cup coarsely grated carrot
- 1 tablespoon orange marmalade
- 1 cup canola oil
- 2 eggs lightly beaten
- 3/4 cup orange juice
- 1 cup reduced fat milk.

METHOD

1. Pre-heat oven to 190C (moderately hot).
2. Line a 12-hole muffin pan with round paper muffin cases – size (35mm height x 90mm wide x 50mm base)
3. Sift dry ingredients into a large bowl, stir in dates and carrots. Then add the combined marmalade, oil, eggs, juice, and milk. Mix until just combined.
4. Spoon mixture evenly into muffin paper cases



5. Cook for 20 minutes. to test if muffins are cooked insert cake skewer, if it comes out clean the muffins are ready.
6. Stand muffins in pan for 5 minutes before removing to cool.

CLASS 1004 VAS

PATCHWORK COMPETITION

RULES AND REGULATIONS

1. THE EXHIBIT IS TO BE NO LARGER THAN 90CM x 125CM.
2. Machine/hand pieced and quilted by exhibitor only.
3. Minimal Embellishments. Small amount only, not to overpower patchwork.
4. Each exhibit entered must be the bona fide work of the exhibitor.
5. Professionals are not eligible, which is defined as someone that works professionally or derives the greater percentage of their income in that craft, art form or technique.
6. All work is to have been completed in the last twelve (12) months prior to its entry at a local Show.
7. The competition follows the three levels of competition: Show Level, Group Level and State Level.
8. An exhibit having won at a Show will compete at the 2025 Group Final. The winning exhibit at the Group Final will then compete in the State Final at the 2025 Melbourne Royal Show.
9. An exhibitor having won at Show Level is not eligible to enter the VAS Patchwork competition at any other Show until after the Group Final judging.
10. An exhibitor is only eligible to represent one Group in the State Final.
11. If for any reason a winner is unable to compete at Group or State Final Level, then the second placegetter is eligible to compete.
12. An exhibit having won at State Final is no longer eligible to compete in the competition.
13. If an exhibitor is found to have won more than one Group Final the exhibitor must forfeit/refund all prizes and will be disqualified from exhibiting for 12 months.

CLASS 1007 VAS SEWING

Proudly Sponsored by Spotlight

RULES AND REGULATIONS

1. Tote Bag up to 30cm width x 40cm height maximum, gusset depth up to 20cm, using approximately 50% recycled components.
2. Machine sewn & may be hand finished; embellishments allowed.
3. Knitted/Crocheted items not acceptable.
4. Each exhibit entered must be the bona fide work of the exhibitor.
5. Professionals are not eligible, which is defined as someone that works professionally or derives the greater percentage of their income in that craft, art form or technique.
6. All work is to have been completed in the last twelve (12) months prior to its entry at a local Show.
7. The competition follows the three levels of competition: Show Level, Group Level and State Level.
8. An exhibit having won at a Show will compete at the 2025 Group Final. The winning exhibit at the Group Final will then compete in the State Final at the 2025 Melbourne Royal Show.
9. An exhibitor having won at Show Level is not eligible to enter the VAS Sewing Competition at any other Show until after the Group Final judging.
10. An exhibitor is only eligible to represent one Group in the State Final.
11. If for any reason a winner is unable to compete at Group or State Final Level, then the second placegetter is eligible to compete.
12. An exhibit having won at State Final is no longer eligible to compete in the competition.
13. If an exhibitor is found to have won more than one Group Final the exhibitor must forfeit/refund all prizes and will be disqualified from exhibiting for 12 months

PHOTOGRAPHY CLASSES

1010 & 1011:

ARCHITECTURE

Bridge, Building or Structure in Australia

Rules and Regulations

1. Unframed.
2. Print no larger than 20cm by 30cm.
3. Must be mounted on thick card (mount no larger than 3cm).
4. Each exhibit entered must be the bona fide work of the exhibitor.
5. Professionals are not eligible, which is defined as someone that works professionally or derives the greater percentage of their income in that craft, art form or technique.
6. All work is to have been completed in the last twelve (12) months prior to its entry at a local Show.
7. The competition follows the three levels of competition: Show Level, Group Level and State Level.
8. An exhibit having won at a Show will compete at the 2025 Group Final. The winning exhibit at the Group Final will then compete in the State Final at the 2025 Melbourne Royal Show.
9. An exhibitor having won at Show Level is not eligible to enter the VAS Photography competition at any other Show until after the Group Final judging.
10. An exhibitor is only eligible to represent one Group in the State Final.

11. If for any reason a winner is unable to compete at Group or State Final Level, then the second placegetter is eligible to compete.
12. An exhibit having won at State Final is no longer eligible to compete in the competition.
13. If an exhibitor is found to have won more than one Group Final the exhibitor must forfeit/refund all prizes and will be disqualified from exhibiting for 12 months.

Entries

Please upload your images to Showday Online by 15 September 2024.

Collection

Place-getters of the Horsham Show photography competitions will be offered a colour print of their entry. This can be picked up with any winning prize cards and / or aggregate ribbons from 1 October 2024.



Notes:



**HORSHAM AGRICULTURAL
SOCIETY WOULD LIKE TO EXTEND
ITS GRATITUDE TO OUR
PREMIER PARTNERS.**

